

Introduction

Welcome to the Exhibition!

Welcome to the public exhibition for development at Phase 2 Matthewsgreen Farm, Wokingham and thank you for coming today.

Today's exhibition has been arranged to provide you with the opportunity to view, discuss and comment upon the phase 2 proposals for the site.

We would like your thoughts and feedback on our proposals. Please look at the panels, talk to team members and let us know your views. The team will be pleased to answer any questions you may have.

Thank you for visiting.



The Outline planning application (Planning Application Number: O/2014/2242) was approved by the Borough Council in April 2015. The Outline Planning Permission will provide approximately 760 new homes, a primary school, a care home and local retail space.

The first phase of this development, for 100 homes and the associated infrastructure was approved in October 2015.

A reserved matters planning application for the second phase of residential development has been made by Bovis Homes and Thames Valley Housing for 84 homes and the associated infrastructure, including part of the streamside recreational park.

Phase 2 Matthewsgreen Farm, Wokingham

Approved Outline Scheme



Phase 2 Matthewsgreen Farm, Wokingham

Phase 2 Layout

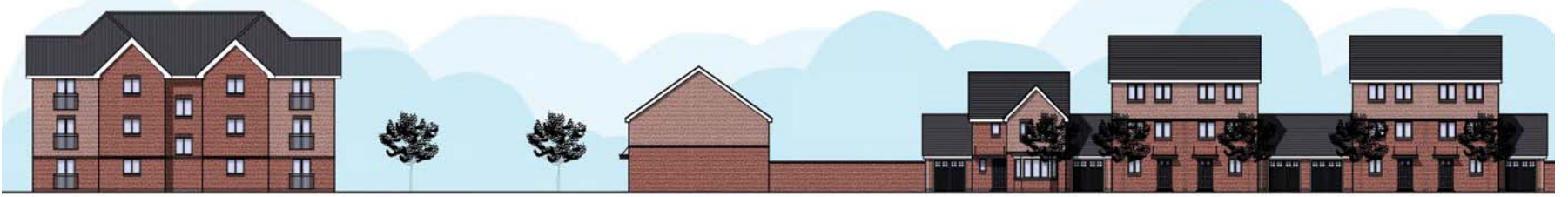
* AFFORDABLE UNITS.

● BIN COLLECTION POINT.



Phase 2 Matthewsgreen Farm, Wokingham

The Appearance of Phase 2



Section A-A



Section B-B



Section C-C



Section E-E



Section F-F



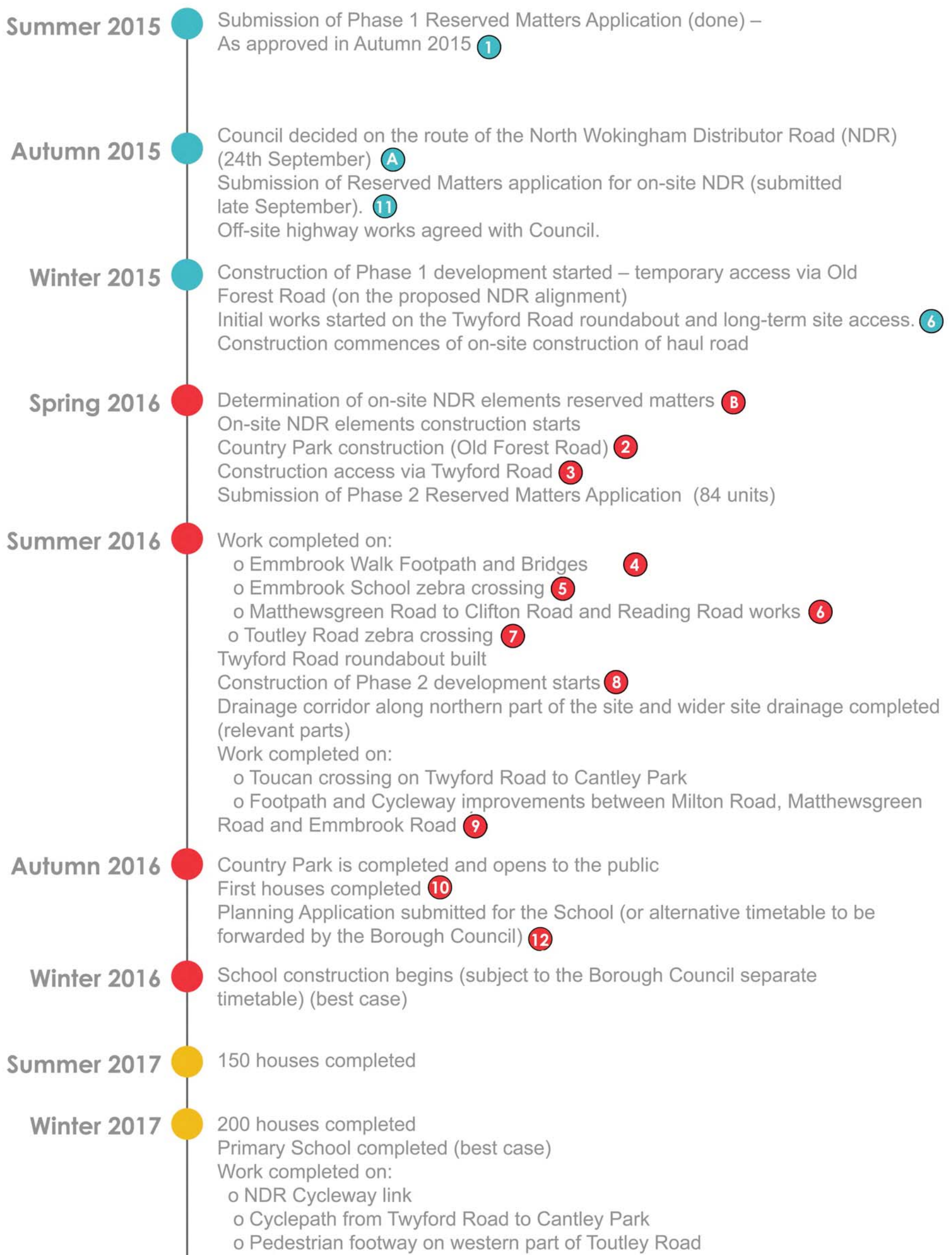
MATERIAL DETAIL



Key Plan

Phase 2 Matthewsgreen Farm, Wokingham

1. Timeline



'The timeline is relevant at March 2016, and is based on the presently intended programme of Bovis Homes, subject to the agreements with the Borough Council'

Phase 2 Matthewsgreen Farm, Wokingham

2. Timeline Infrastructure Map

To be read alongside the Timeline on Board 1

KEY

- 2015
- 2016
- 2017



Phase 2 Matthewsgreen Farm, Wokingham